

Dozuki

Opening up hardware communities

*Dozuki / iFixit
Eric Craig Doster*

iFixit

A Wikipedia of repair



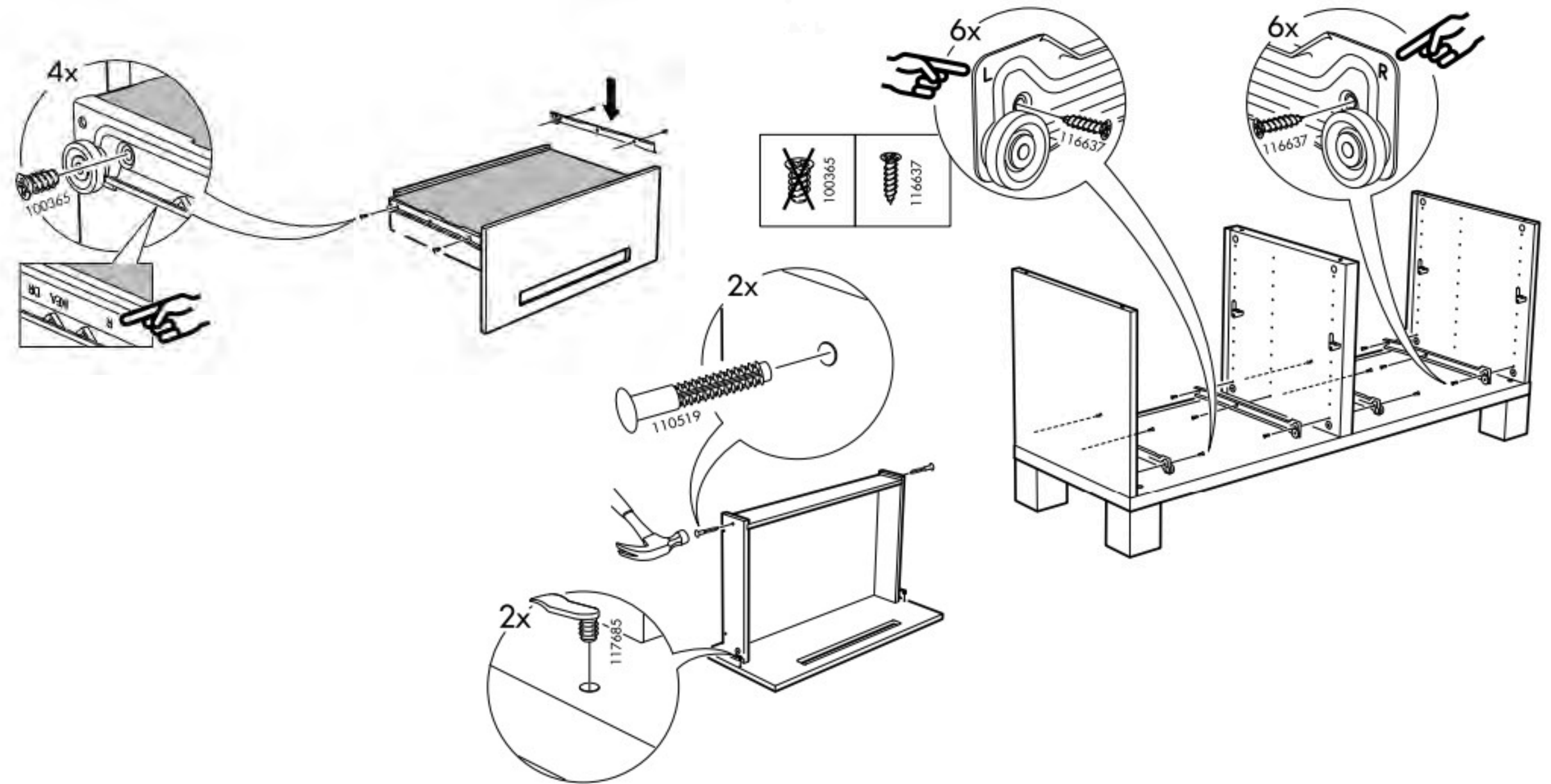
iFixit started in 2004 in a Cal Poly dorm.
We've got about 25 kids and 2.5 adults.
1 woman.



Ikea BESTÅ ÅDAL

iFixit

Documentation Examples



Ikea BESTÅÅDAL



Lincoln Belted Welder 200A

Have a qualified electrician connect power to the input panel or starter, as appropriate, in accordance with the National Electrical Code, all local codes and the wiring diagram glued to the inside of the door on the start button side of the control box.

The welder frame must be grounded. A stud marked with the symbol \equiv located inside the control box is provided for this purpose. See the National Electrical Code for details on proper grounding methods. (If an old machine does not have a grounding stud, connect the grounding wire to an unpainted frame screw or bolt.)

Recommended Input Wire, Ground Wire and Fuse Sizes
Based on National Electrical Code
For 60 Hertz, 3 Phase Welders at 60% Duty Cycle

| Welder Size | Input Voltage | Input Ampere Rating | Copper Wire Size Type 75°C in Conduit | | Fuse Size (Super Lag) |
|---------------------|---------------|---------------------|---------------------------------------|---------------|-----------------------|
| | | | 3 Input Wires | 1 Ground Wire | |
| AC Motor SAE 200 | 230 | 44 | 8 | 8 | 80 |
| | 460 | 22 | 12 | 10 | 40 |
| | 575 | 18 | 14 | 10 | 30 |
| AC Motor SAE 300 | 230 | 62 | 6 | 8 | 100 |
| | 460 | 31 | 10 | 10 | 50 |
| | 575 | 25 | 10 | 10 | 40 |
| AC Motor SAE 400 | 230 | 78 | 6 | 6 | 125 |
| | 460 | 39 | 8 | 8 | 70 |
| | 575 | 31 | 10 | 10 | 50 |
| AC Motor SAE 600 | 220 | 106 | 3 | 6 | 200 |
| | 440 | 53 | 8 | 8 | 100 |
| | 550 | 42.5 | 8 | 8 | 80 |
| DC-DC SAE 400 | 230 | 120 | 3 | 6 | 175 |
| | 460 | 60 | 6 | 8 | 90 |
| | 575 | 48 | 8 | 8 | 70 |

"BELTED" MODELS

These machines consist of the same generator and controls as the motor-generator models but are driven by a PTO, electric motor or an engine.

The appropriate operating and maintenance instructions in this manual apply to the belted welders.

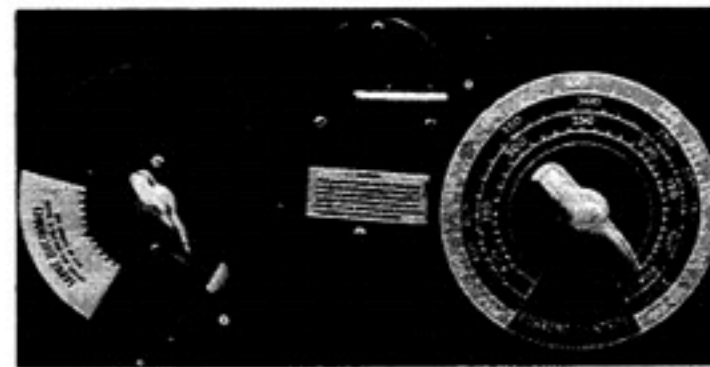
INSTALLATION

The welder frame must be grounded. A stud marked with the symbol \equiv located on the welding generator support frame is provided for this purpose. See the National Electrical Code for details on proper grounding methods. The ground connector must be No. 8 or larger

Cable Sizes for Combined Length of Electrode Plus Work Cable (Copper) - 60% Duty Cycle

| Machine Size in Amps | Cable Length | | |
|----------------------|---------------|----------------|----------------|
| | Up to 150 ft. | 150 to 200 ft. | 200 to 250 ft. |
| 200 | 2 | 1 | 1/0 |
| 300 | 1 | 1/0 | 2/0 |
| 400 | 2/0 | 3/0 | 4/0 |
| 600 | 3/0 | 4/0 | 2-3/0 |

CONTROL OF WELDING CURRENT



CONTINUOUS CURRENT CONTROL

The Continuous Current Control provides the major adjustment of welding current to suit each particular application. On older machines the Continuous Current Control has a single dial calibrated in amperes and three colored pointers. On the SAE-300, above Code 5006, and the SAE-400, above Code 7638, this control has three separate colored scales. The colored pointers (or scales) correspond

wire. (If an older welder does not have a grounding stud, connect the ground wire to an unpainted frame screw or bolt.)

Design the driving system to operate the generator at a steady full load speed (1800 or 1500 RPM as indicated on the nameplate). Build a rigid mounting which maintains accurate alignment through the driving system and minimizes vibrations transmitted to the welder. Use a flexible type coupling when connecting the generator shaft directly to the power source shaft. For belt driven installations, prevent excessive bearing wear by using only enough belt tension to avoid slipping.

The Job Selector dial is divided into four sections. The yellow section marked "Large Electrode" provides a high open circuit voltage. The black section marked "Normal Welding Range" gives a medium-high open circuit voltage. The red section marked "Overhead and Vertical" is a medium-low open circuit voltage. The section marked "Special Applications" provides a low open circuit voltage which is used in conjunction with a minimum setting on the Continuous Current Control.

MAINTENANCE AND TROUBLE SHOOTING

WARNING: Have qualified personnel do the maintenance and trouble shooting work. Turn the power off using the disconnect switch at the fuse box before working inside the machine.

GENERAL INSTRUCTIONS

1. Blow out the welder and controls with an air hose at least once every two months. In particularly dirty locations this cleaning may be necessary once every week. Use low pressure air to avoid driving dirt into the insulation.
2. Reactor brushes are silver graphite and should not be greased. Keep the contacts clean.
3. Rotate the Current Control through its entire range each morning. This cleans the contacts to lessen the possibility of the contact "freezing". Do not do this while welding.
4. The starter on motor driven models should be inspected every six months. Any accumulated dust should be blown out of the starter.
5. Keep electrode and ground connections tight.

MOTOR PROTECTION (AC Motor Driven Only)

The AC motor is protected by a special device operated by both temperature and current. This device stops the machine if the windings reach the maximum safe operating temperature because of frequent overloads, high room temperature plus overload, or abnormally high or low input voltage. Protection is also assured against excessive currents resulting from single phase or unbalanced line conditions.

The thermostat automatically resets when the temperature reaches a safe operating level. Restart the motor by pushing the start button.

Cooling of the motor can be speeded by holding in the start button and operating the machine idle. **CAUTION:**

To change polarity on DC motor driven models, interchange the welding cables.

AUXILIARY POWER OUTLET (Optional)

AC motor driven models can be furnished with a 1 KW exciter (1 KW standard on belted welders). This exciter provides 120 volt DC power for operating incandescent lights or DC power tools. When using a belted welder as a power source for tools, run the engine at the normal welding speed.

Models prior to code 3500 equipped with the optional two voltage switch cannot be cooled in this manner without burning out the NVR coil. If the reason for the disconnection was single phase or unbalanced line conditions, correct the situations before attempting to restart the motor. Serious damage will result if the start button is held in with these conditions present.

BEARINGS

Your welder is equipped with double-shield ball bearings having sufficient grease to last indefinitely under normal conditions. Where the welder is used constantly or in excessively dirty locations, it may be necessary to add one ounce of grease per year.

When greasing the bearings, keep all dirt out of the area. Wipe the fittings completely clean and use clean grease and equipment. More failures are caused by dirt introduced while greasing than from insufficient grease.

COMMUTATOR AND BRUSHES

The generator brushes are properly adjusted when the welder is shipped. They require no particular attention. **DO NOT SHIFT THE BRUSHES** or adjust the rocker setting.

Periodically inspect the commutators and brushes by removing the commutator covers. **WARNING: DO NOT** remove or replace these covers while the machine is running.

Commutators require little attention. However, if they are black or appear uneven, have an experienced mainte-

Lincoln Belted Welder 200A



Apple iPhone 4

“Why would you want that?” “It wouldn’t be a good consumer experience.”

?



?

Apple iPhone 4

oManual

Open XML-based, procedural documentation standard

oManual

is the underlying format used for every guide on iFixit.com and MakeProjects.com.

Package Example

- ZIP compressed .omanual archive:
 - manifest.xml
 - MacBook-Core-Duo.xml
 - procedure-a/
 - procedure.xml
 - media/
 - step-1.jpg
 - step-2.jpg
 - procedure-n/
 - ...
 - media/
 - document.pdf
 - schematic.psd

```
<?xml version="1.0"?>
<procedure locale="en" xmlns="http://omanual.com" xmlns:xsi="http://www.w3.org/200
instance" xsi:schemaLocation="http://omanual.com/openmanual_0.2.xsd">
  <title>Installing MacBook Core Duo Memory Cover</title>
  <summary />
  <image>media/main.jpg</image>
  <author id="1">iRobot</author>
  <time_required />
  <difficulty>Easy</difficulty>
  <categories>
    <category>MacBook Core Duo</category>
  </categories>
  <introduction><![CDATA[<p>This keeps the RAM levers out of the way of the batte
secures the hard drive.</p>]]></introduction>
  <introduction_rendered><![CDATA[<p>This keeps the RAM levers out of the way of
and secures the hard drive.</p><div class="parts"><strong>Relevant parts</strong><
href="http://www.ifixit.com/MacBook-Parts/MacBook-Memory-Cover/IF186-013">MacBook
Cover</a></li></ul></div><div class="tools"><strong>Tools</strong><ul><li><a
href="http://www.ifixit.com/Item/Coin">Coin</a></li><li><a
href="http://www.ifixit.com/Tools/Phillips-00-Screwdriver/IF145-006">Phillips #00
Screwdriver</a></li></ul></div>]]></introduction_rendered>
  <tools>
    <tool notes="" thumbnail="http://www.ifixit.com/Item/Coin">Coin</tool>
    <tool notes="" thumbnail="http://cart-products.ifixit.net/cart-
products/GGXkxBRrmZg6iRdE.mini" url="http://www.ifixit.com/Tools/Phillips-00-Screw
006">Phillips #00 Screwdriver</tool>
  </tools>
  <parts>
    <part notes="" thumbnail="http://www.ifixit.com/static/images/guide/NoImage_
url="http://www.ifixit.com/MacBook-Parts/MacBook-Memory-Cover/IF186-013">MacBook M
Cover</part>
  </parts>
  <flags />
  <documents />
  <prerequisites>
    <prerequisite id="278" locale="en" path="/Installing-Battery-
278/procedure.xml">Installing MacBook Core Duo Battery</prerequisite>
  </prerequisites>
  <steps>
    <step number="0" title="">
      <lines>
        <line bullet="red" level="0">Remove the three evenly-spaced Phillips s
along the rear wall of the battery compartment.</line>
        <line bullet="icon_reminder" level="0">The screws are captive to the m
cover.</line>
      </lines>
    </step>
  </steps>
</procedure>
```

We want to continue to improve this standard, find out more and join in at:

www.oManual.org

Co-Authored by iFixit & O'Reilly Media

iFixit

A Wikipedia of repair



This is an all-to-familiar sight. We're here to help with this.

Installing iPhone 4 Logic Board

Replace a dead logic board in your iPhone 4.

Author: [Walter Galan](#) Difficulty: **Difficult**

x 0 x 36 x 23

Use this guide to replace your iPhone 4's logic board.

Sections

- Rear Panel steps
- Battery steps
- Logic Board steps

Formats

- PDF
- XML
- Embed

Tools

- Phillips #00 Screwdriver
- Plastic Opening Tools
- Small Flathead Screwdriver
- Spudger
- iPhone 4 5-Point Pentalobe Screwdriver (if iPhone has external pentalobe screws)
- iPhone SIM Card Eject Tool



iPhone 4

GSM / 16 or 32 GB capacity / Model A1332 / Black and White

[Ask a question](#)

[Start a new guide](#)

- 18 Step-by-step Guides
- 574 Solutions
- 20 Parts

View: **Paginated** **Full width** Slideshow Embed

- [View huge](#)
- [Image metadata](#)
- [Copy to my images](#)



Step 1 — Rear Panel

[Edit](#)

- Before disassembling your iPhone, be sure it is powered off.
- Remove the two 3.6 mm Phillips screws next to the dock connector.
- Apple has recently substituted the two Phillips screws with 5-Point "Pentalobe" screws. If your iPhone 4 has 5-Point "Pentalobe" screws instead of Phillips, please refer to the second picture.
- Remove the two 3.6 mm Pentalobe screws next to the dock connector.
- During reassembly, we recommend you replace the 5-point screws with equivalent Phillips screws. Our Liberation Kit provides the tools and screws

iFixit

A Wikipedia of repair

Image rich guides that present a painless path to repair for many devices

Teach Action.

We make technical documentation come to life.

[Sign up for the Beta](#)



Guidebook

Community content platform that makes procedural manuals come alive



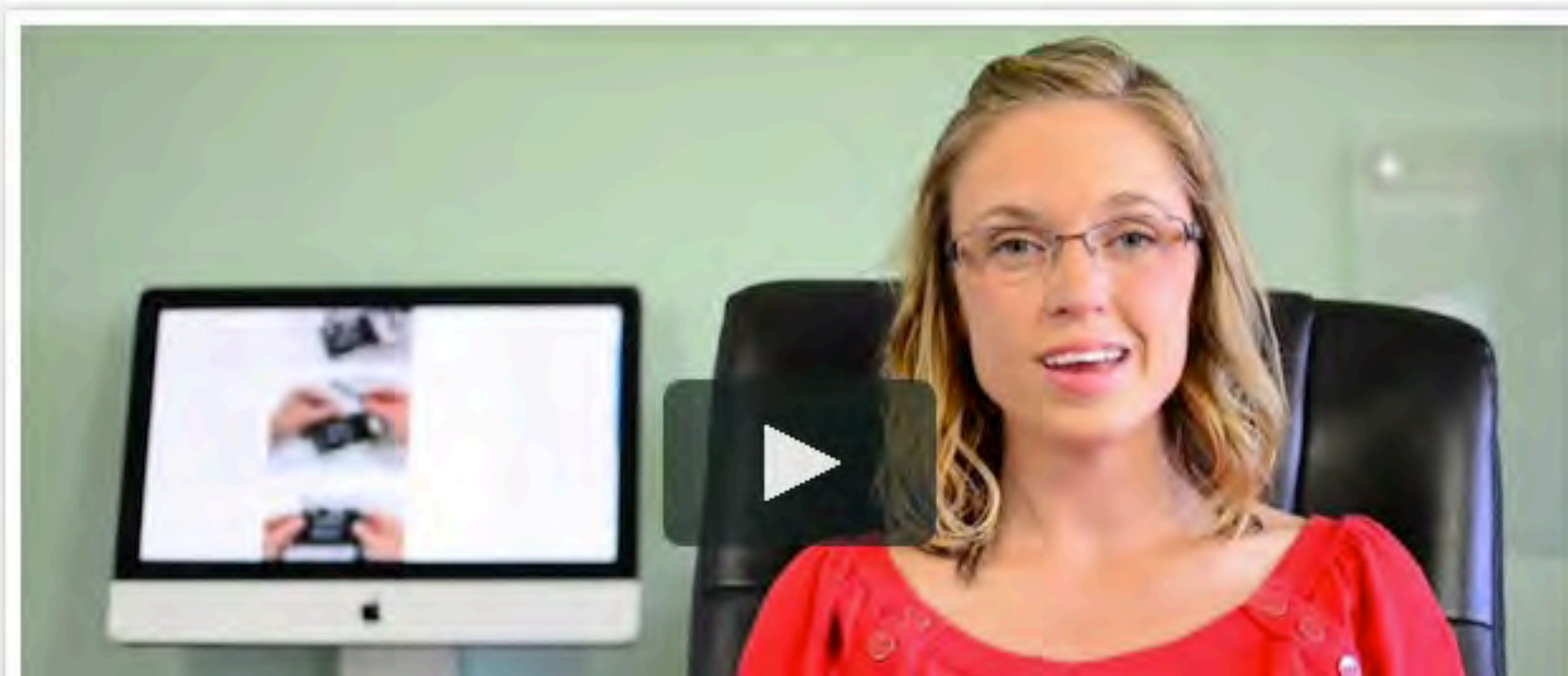
Answers

Q&A platform that transforms everyday conversations into structured knowledge

Coming
Soon!

Dozuki

Step-by-step guides from your team or your community



Jellyfish Tank



From MAKE Magazine

This project first appeared on the pages of MAKE magazine.



Featured Guide

This project has been found to be exceptionally cool by the MAKE staff.

Convert a regular aquarium into a jellyfish habitat.

Author: [Alex Andon](#) Time required: **3 to 5 days** Difficulty: **Easy**

★ x7 x

I was always terrified of jellyfish as a kid. The thought of a slimy translucent blob just below the water's surface that could deliver a painful sting kept me out of the ocean most of the summer. It wasn't until years later when I collected a small jellyfish at the beach and observed it in an aquarium that I realized how stunningly beautiful they are. As it pulsed steadily and allowed its tentacles to flutter behind it, I was completely hypnotized. Soon, I decided to design and build an aquarium that could keep jellyfish alive and well. Convert a regular aquarium into a jellyfish habitat.

Jellyfish can't live in a regular aquarium because they get sucked into the filtration pumps and liquefied. Using my extensive experience in building aquariums as part of my research projects at Duke and the University of Delaware, I developed a tank with a special water flow to keep jellies suspended in the middle of the tank. The jellyfish aquarium design described in this article has no dead spots for water flow, eliminates strong points of suction, and creates a laminar water flow pattern that sweeps the delicate jellyfish away from the edges of the tank.

Sections

- [Build the tank \(optional\).](#)
- [Assemble the spray bar.](#)
- [Make the exit screen.](#)
- [Make the drain.](#)
- [Assemble the bucket.](#)
- [Install the spray bar.](#)
- [Insert the flow sheet.](#)

Relevant parts (continued)

- PVC adapter, male pipe thread × slip, 1½"
- PVC elbow, slip × slip, 1½"
- Plastic epoxy
- Teflon tape
- Threaded bulkhead fitting, 1½"
- Flexible hose, ½" diameter, 3' length
- Mesh screen, cut to (width of tank + 2") × (½ height of



Biology

Biology Science.

[Start a new guide](#)

6 Projects



[LEARN MORE](#)



MakeProjects

*Empowering the
Maker movement*



TurtleBot

A wonderful example of an OSH community on MakeProjects



Collin | Reputation 1

[Get Started »](#)

[Contribute »](#)

[Search](#)

TurtleBot

7 Guides



Add a Demo Button to Your TurtleBot



Build Your Own TurtleBot: Plates



Create Cables for the TurtleBot Power Board



Build an Arm for Your TurtleBot



Build Your Own TurtleBot: Power and Sensor Board



Wiring and Attaching an Arm to Your TurtleBot



Build Your Own TurtleBot: 2" Standoff

1 Guide In Progress



Build a Pan and Tilt Head for your TurtleBot

Video Overview

[Edit](#)

[View](#)

[Edit](#)

[History](#)

TurtleBot

[Image metadata](#)
[Copy to my images](#)



TurtleBot is a low-cost, open source, personal robot kit with open-source software. With TurtleBot, you'll be able to build a robot that can drive around your house, see in 3D, and have enough horsepower to create exciting applications.

[Start a new guide](#)

[7 Projects](#)



10 Lessons Learned

Rules of engagement from growing the iFixit community.

I. Teach your community how to do it right

Teach the community what you'd like to see by setting the example.



Step 21

- The upper and lower cases are held together by seven release latches located on the back of the console. Their locations are highlighted in red.

Edit



Step 22

- If you do not have an Xbox 360 opening tool, skip to the next step.
- Press the Xbox 360 opening tool down into the clips securing the lower case to the upper case near the I/O ports.
- While pressing down on the tool, push the lower and upper cases apart to separate the retaining clips.

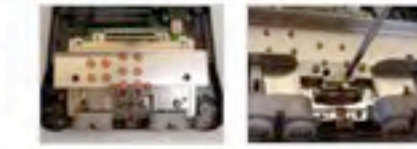
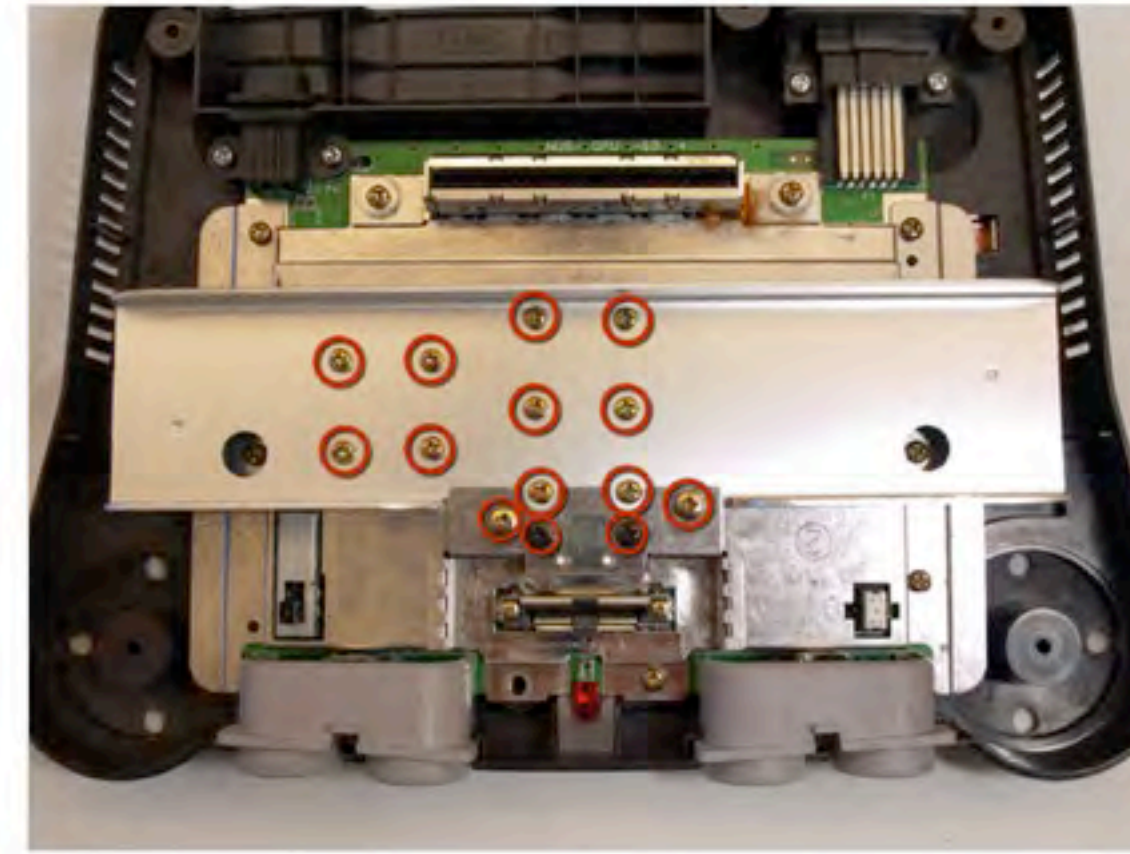
Edit



Step 5

- Lift off the top cover.

Edit



Step 6 — Metal Plate

- Remove the 14 screws shown using the large Phillips screwdriver.

Edit

Which one was submitted by a user? by staff?

July 20, 2011

| Time | User | Activity |
|----------|-----------|---------------------|
| 02:51 PM | michael ↕ | Introduction edited |
| 02:51 PM | michael ↕ | Introduction edited |
| 02:51 PM | michael ↕ | Introduction edited |

February 2, 2011

| Time | User | Activity |
|----------|-------------------|---------------------|
| 12:14 PM | Andrew Bookholt ↕ | Introduction edited |
| 12:13 PM | Andrew Bookholt ↕ | Introduction edited |
| 12:12 PM | Andrew Bookholt ↕ | Introduction edited |

November 17, 2010

| Time | User | Activity |
|----------|-------------------|-----------------------|
| 01:07 PM | Andrew Bookholt ↕ | Step #19 edited: TEXT |
| 01:07 PM | Andrew Bookholt ↕ | Introduction edited |
| 12:58 PM | Andrew Bookholt ↕ | Introduction edited |

November 16, 2010

| Time | User | Activity |
|----------|-------------------|-----------------------|
| 04:43 PM | Andrew Bookholt ↕ | Introduction edited |
| 03:37 PM | Andrew Bookholt ↕ | Step # edited: TEXT |
| 01:33 PM | Andrew Bookholt ↕ | Step #22 edited: TEXT |
| 01:32 PM | Andrew Bookholt ↕ | Introduction edited |

November 15, 2010

| Time | User | Activity |
|----------|----------------|---------------------|
| 06:03 PM | Walter Galan ↕ | Introduction edited |
| 06:02 PM | Walter Galan ↕ | Introduction edited |
| 06:02 PM | Walter Galan ↕ | Introduction edited |

2. Useful is Forever


Building in resiliency to your community project is invaluable.

Enable it to grow over time by allowing others the freedom to make changes.

« Meta Information

Editing step 1

delete step | insert step



- If you need to backup the data on your current hard drive, follow the instructions in this step. Otherwise, continue to the next step.
- On a Windows/OS X/Linux machine, format an external USB hard drive (with enough space available to backup your current hard content) into the FAT32 file system.
- Make sure it's formatted FAT32. The Playstation 3 backup utility will not recognize any other file system.
- Connect your formatted hard drive to the Playstation 3 through a USB port and power the console up.

← → + - Formatting help

- Navigate the XMB to the 'Settings' menu and select 'System Settings'
- Select the 'Backup Utility' function to create a backup of your data - this can take up to 2 hours if you have a lot of data on the PS3.

Save

3. Useful is Forever

Helpful contribution is remembered.

Dear Andrew Bookholt,

I would personally like to thank you for all your hard work on creating the magnificent guides you have done over the last couple of years on the occasion of your retirement. These guides and the method of creating them will help a lot of people for a very long time. I wish you all the best as you move on to greater challenges in life. Your future contributions will be appreciated even more now that we're both at the same pay grade ;-) Who knows, you might even earn a tee shirt too.

Best Wishes on your future success,

Richard Mayer



A letter of thanks from a super user to a team member who recently left.



4. If possible, be cause-oriented

Make an emotional connection with your community. Give them a goal.



Case in point:

Kyle is in Africa shooting a documentary right now.

WE HOLD THESE TRUTHS TO BE SELF-EVIDENT

SELF-REPAIR MANIFESTO:

REPAIR IS BETTER THAN RECYCLING.

MAKING OUR THINGS LAST LONGER IS BOTH MORE EFFICIENT AND MORE COST-EFFECTIVE THAN MINING THEM FOR RAW MATERIALS.

REPAIR SAVES THE PLANET.

EARTH HAS LIMITED RESOURCES AND WE CAN'T RUN A LINEAR MANUFACTURING PROCESS FOREVER. THE BEST WAY TO BE EFFICIENT IS TO REUSE WHAT WE ALREADY HAVE!

REPAIR SAVES YOU MONEY.

FIXING THINGS IS OFTEN FREE, AND USUALLY CHEAPER THAN REPLACING THEM. DOING THE REPAIR YOURSELF SAVES SERIOUS DOUGH.

REPAIR TEACHES ENGINEERING.

THE BEST WAY TO FIND OUT HOW SOMETHING WORKS IS TO TAKE IT APART!

IF YOU CAN'T FIX IT, YOU DON'T OWN IT.

REPAIR CONNECTS PEOPLE AND DEVICES, CREATING BONDS THAT TRANSCEND CONSUMPTION. SELF-REPAIR IS SUSTAINABLE.



REPAIR CONNECTS YOU WITH YOUR THINGS ◊ REPAIR EMPOWERS AND EMBOLDENS INDIVIDUALS
REPAIR TRANSFORMS CONSUMERS INTO CONTRIBUTORS ◊ REPAIR INSPIRES PRIDE IN OWNERSHIP
REPAIR INJECTS SOUL AND MAKES THINGS UNIQUE ◊ REPAIR IS INDEPENDENCE
REPAIR REQUIRES CREATIVITY ◊ REPAIR IS GREEN ◊ REPAIR IS JOYFUL
REPAIR IS NECESSARY FOR UNDERSTANDING OUR THINGS ◊ REPAIR SAVES MONEY AND RESOURCES

WE HAVE THE RIGHT:

TO OPEN AND REPAIR OUR THINGS WITHOUT VOIDING THE WARRANTY
TO DEVICES THAT CAN BE OPENED ◊ TO ERROR CODES AND WIRING DIAGRAMS
TO TROUBLESHOOTING INSTRUCTIONS AND FLOWCHARTS
TO REPAIR DOCUMENTATION FOR EVERYTHING ◊ TO CHOOSE OUR OWN REPAIR TECHNICIAN
TO REMOVE 'DO NOT REMOVE' STICKERS ◊ TO REPAIR THINGS IN THE PRIVACY OF OUR OWN HOMES
TO REPLACE ANY AND ALL CONSUMABLES OURSELVES
TO HARDWARE THAT DOESN'T REQUIRE PROPRIETARY TOOLS TO REPAIR
TO AVAILABLE, REASONABLY PRICED SERVICE PARTS

5. Find an Enemy

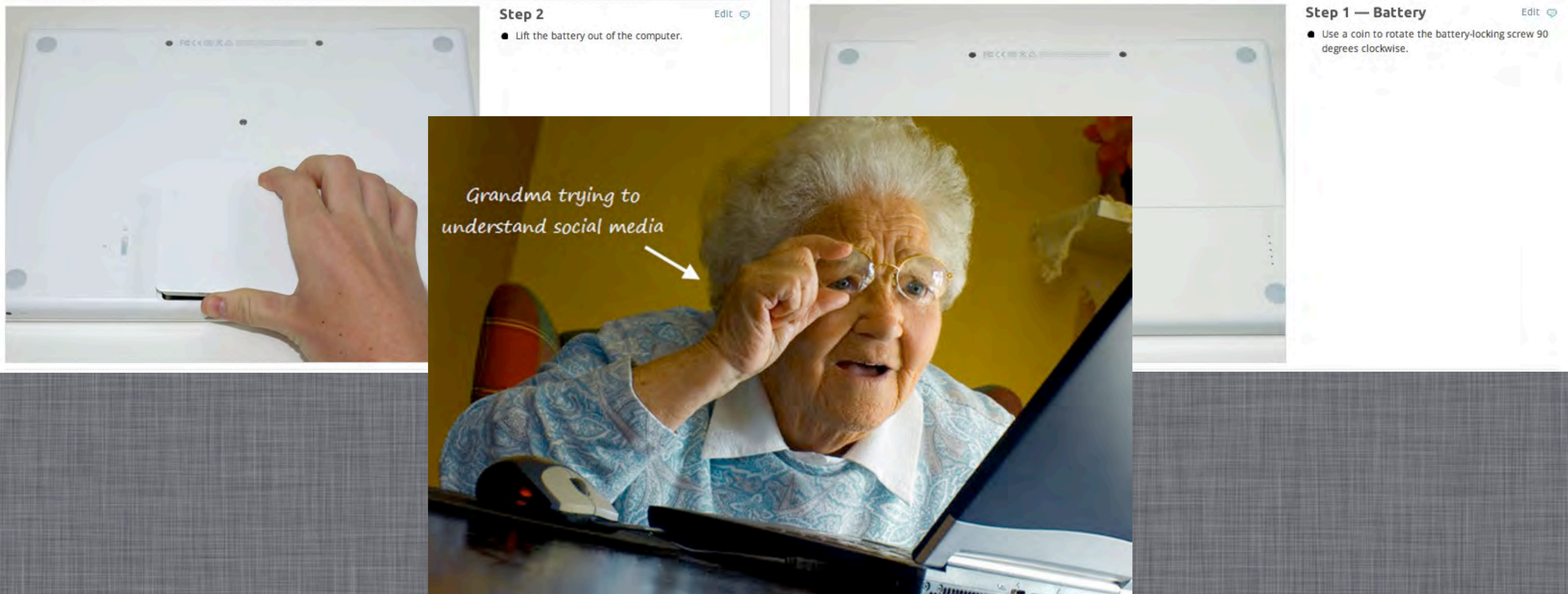
Teach the community what you'd like to see by setting the example.

For example:

With Dozuki, our stand is against static documentation: it's prone to irrelevance and error.

6. Be Intuitive

At iFixit, we are thinking of Soccer Moms and your Grandparents when we write our content, tweak our UI, or add functionality.



We constantly get thank you's from the elderly and technologically illiterate.

7. Be Accessible (Be Everywhere)

Try to be as portable (as accessible) as you can.



Embed this guide

With the HTML code below, you can embed this guide as a small widget on your website.

```
<script type="text/javascript"
src="http://cacher.dozuki.net/static/embed/fixit-embed.2.js#d=6449&site=www.ifixit.com">
</script> <p><a href="http://www.ifixit.com/Teardown/Motorola-Droid-Bionic-Teardown/6449/1">Motorola Droid Bionic Teardown</a></p>
```

Preview

ifixit Teardown Begin ▶

Motorola Droid Bionic Teardown

Motorola Droid Bionic Teardown.

```
<procedure locale="en" xsi:schemaLocation="http://www.ifixit.
xmlns:xsi="http://www.w3.org/2001/XMLSchema-instance">
  <title>Motorola Droid Bionic Teardown</title>
  <summary><![CDATA[Motorola Droid Bionic Teardown.]]></summary>
  <image>http://guide-images.ifixit.net/igi/pOZkZWJ4pwTQGSU1</image>
  <author id="225663">David Hodson</author>
  <time_required/>
  <difficulty>Moderate</difficulty>
  <categories>
    <category>Motorola Droid Bionic</category>
  </categories>
  <introduction><![CDATA[<p>The Motorola Droid Bionic is the
rk. Join us as we take a peek inside this behemoth of a pho
</p>Follow <a href="http://www.twitter.com/ifixit" rel="nof
</introduction>
  <introduction_rendered><![CDATA[<p>The Motorola Droid Bioni
LTE network. Join us as we take a peek inside this behemoth
</p>Follow <a href="http://www.twitter.com/ifixit" rel="nof
ass="tools"><strong>Tools</strong><ul><li><a href="http://w
pening Tools</a></li><li><a href="http://www.ifixit.com/Too
ifixit.com/Tools/T5-Torx-Screwdriver/IP145-039">T5 Torx Sc
</tools>
  <tool notes="" thumbnail="http://cart-products.ifixit.ne
url="http://www.ifixit.com/Tools/Plastic-Opening-Tools/I
  <tool notes="" thumbnail="http://cart-products.ifixit.ne
url="http://www.ifixit.com/Tools/Spudger/IP145-002">Spud
  <tool notes="" thumbnail="http://cart-products.ifixit.ne
```

Write It Once... Read It Everywhere!!!


8. Responsiveness to community feedback is not optional

Show how much you respect your users by giving ear to and engaging your users.

The screenshot shows a post on the iFixit Meta website. The post is titled "Should iFixit staff be exempt from the reputation system?" and is authored by Kyle Wiens, who has a reputation score of 6.2k. The post was asked on July 9, 2010, at 12:19 AM. The content of the post discusses the reputation system and the author's perspective on staff members being included in it. The post has a score of 6 and is tagged with "community-policy" and "reputation". There are also statistics for the post, showing 0 responses today, 15 this week, 7 this month, and 865 all time.

« Meta Index

6
Score


Kyle Wiens
6.2k
Asked
Jul 9 2010
12:19 AM

Should iFixit staff be exempt from the reputation system?

History • Actions • Add Comment

There has been some discussion that it's unfair to include iFixit team members in the reputation rankings.

The primary reason this is an issue now is because on April 22, we started awarding reputation to repair manual authors from people fixing things using their guides. When people follow a repair guide and click 'I did it' at the end, 30 points are distributed amongst the guide authors (just like the 30 points awarded for accepting an answer.) Had we retroactively awarded reputation, our staff members (myself included) would have rocketed to the front of the reputation charts. We didn't think that was fair, so we gave iRobot ownership over legacy repair guides. Since I haven't personally written very many repair guides lately, my reputation is still relatively low.

We currently include our team members because we believe the reputation system is a metric of the community's trust in individual people, and that trust is born out in upvotes on answers and 'I did it' claims on repair guides. Reputation is just a number, but staff members like Ben and Walter have earned the points they have. Anyone else could do what they have and beat them in the reputation rankings.

That said, they were paid to do it—the guides that they write are how we've always supported our parts business. And I certainly understand the argument that this gives them have an advantage. And this is a community-run site. I understand both sides, and I want to do what is best for the community. So I'll put the decision to you: Should we exclude ourselves from the reputation system?

First, how things work now: iFixit team members earn and lose reputation like anyone else, and are listed on the [/Users](#) page like everyone else. We have moderator privileges, but they're the same privileges anyone can have access to once their reputation is high enough (plus a few tools to make bulk changes easier).

There are a few options for changing things:

Tags

community-policy
reputation

Stay involved

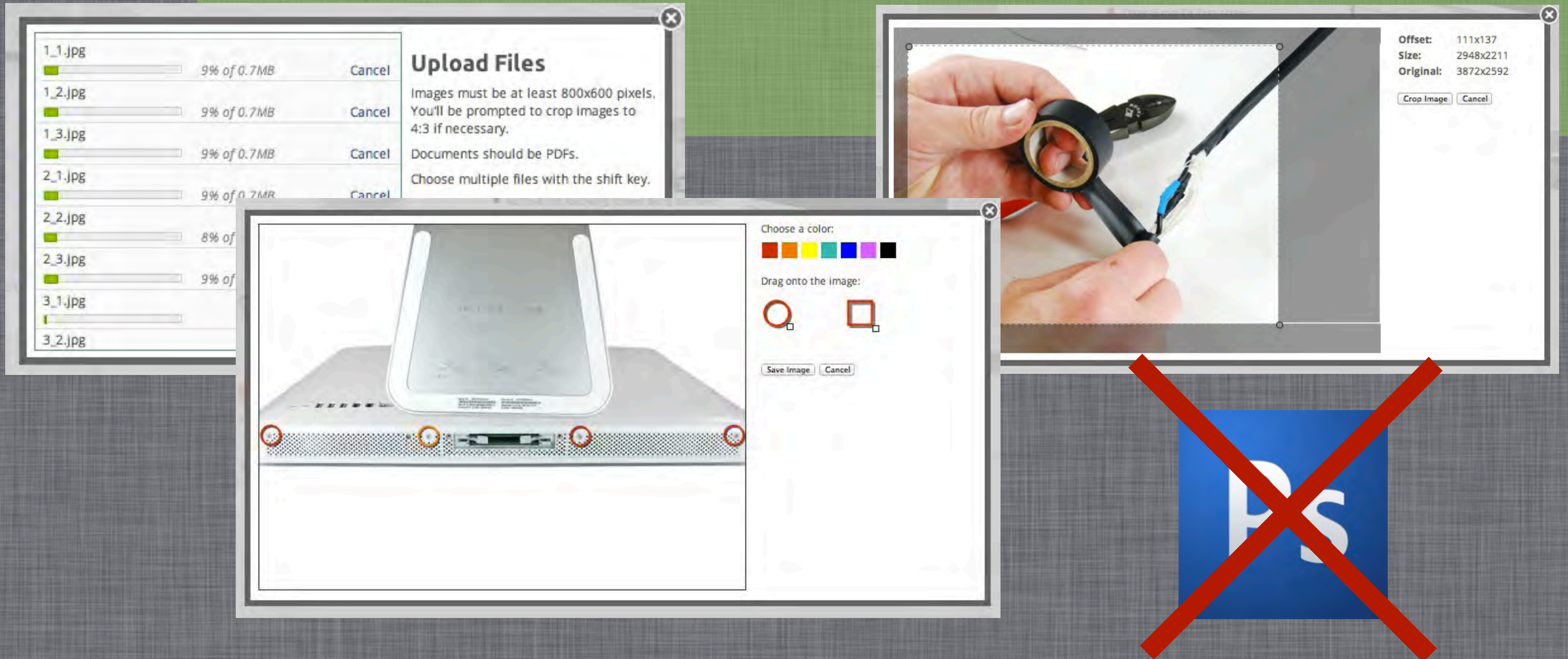
[Watch for new responses](#)

Statistics

| | |
|------------|-----|
| today | 0 |
| this week | 15 |
| this month | 7 |
| all time | 865 |

9. Reduce the community's need for special tools

Give users what they need to have an seamless experience.



iFixit example: Image upload, markup & cropping = no need for Photoshop

10. Establish a voice

Write, Write, Write



iFixit, for example, focuses on teardowns (a specific type of article) as a content marketing strategy

**Growth comes from adoption,
Adoption comes from understanding,
Understanding is hard.**

*Getting people who get it to like it is easy...
Getting people to get it isn't.*

Dozuki

Eric Craig Doster

Eric@Dozuki.com

@EricDoster